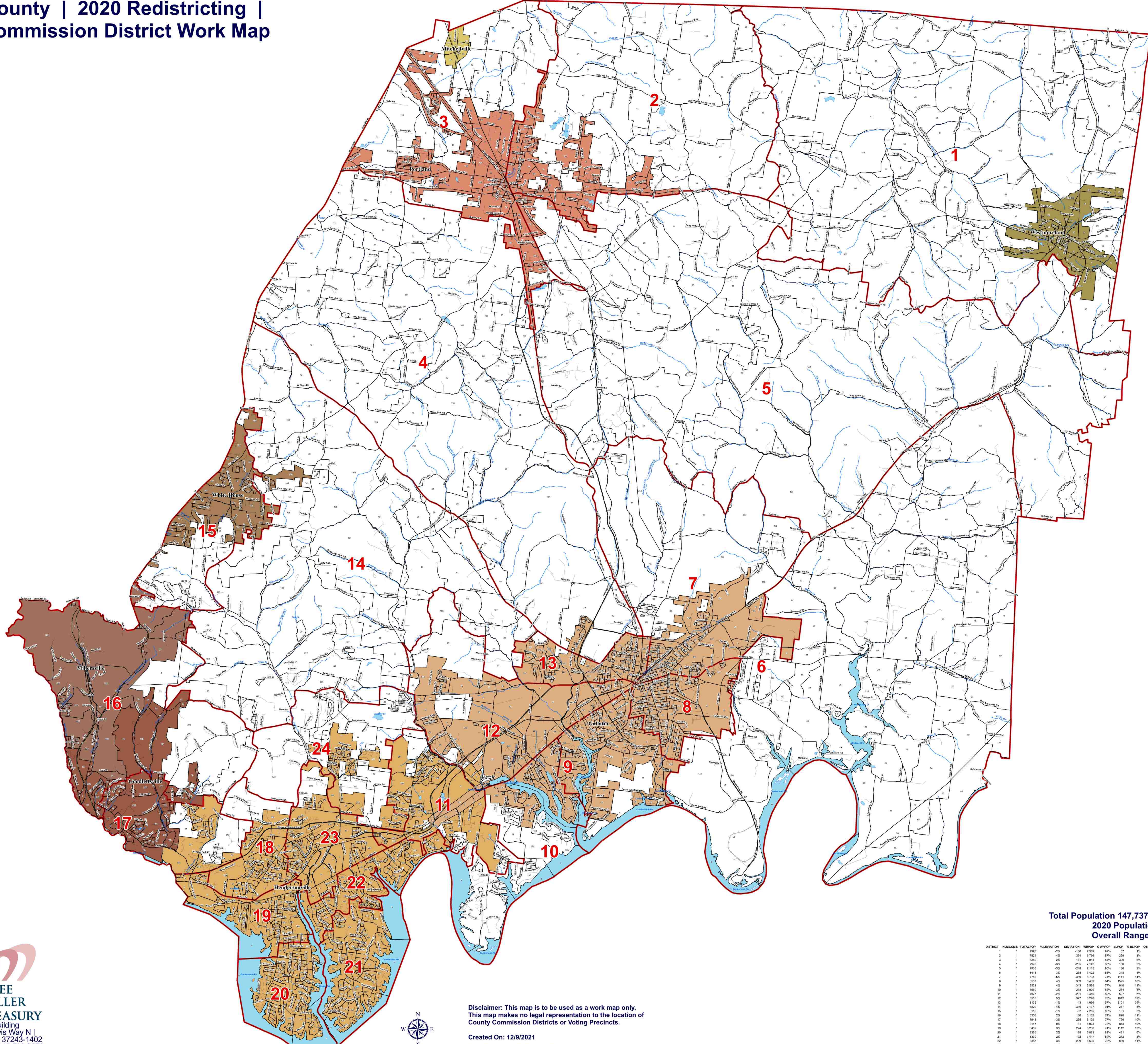


Sumner County | 2020 Redistricting | County Commission District Work Map



- Blocks
 - Interstates
 - U.S. Highway
 - State Highway
 - Local Roads
 - Railroads
 - Stream
 - Powerline (Incomplete)
 - County Commission District
 - Lakes / Rivers
- City, Town**
- Gallatin
 - Goodlettsville
 - Hendersonville
 - Millersville
 - Mitchellville
 - Portland
 - Westmoreland
 - White House
- 1** County Commission District Number
1234 Voting Precinct Number

Total Population 147,737 based on 2020 Census
2020 Population by District
Overall Range [5 - (-5)] = 10

DISTRICT	NUMCENS	TOTALPOP	%DEVIATION	DEVIATION	WSPOP	%WSPOP	ALPOP	%ALPOP	OTHERPOP	%OTHERPOP	WSPOP	%WSPOP	TOTALPOP	WSPOP	ALPOP	OTHERPOP	WSPOP
1	1	7999	-2%	-100	2,288	92%	87	1%	542	7%	227	3%	8566	5184	207	465	145
2	1	7824	-4%	-304	6,796	87%	269	3%	759	10%	430	5%	8556	5184	207	465	265
3	1	8269	-2%	-161	7,844	88%	269	3%	816	11%	564	7%	8556	5233	287	538	352
4	1	7973	-3%	-205	7,142	90%	160	2%	671	8%	305	4%	8292	5738	119	435	199
5	1	7920	-2%	-246	7,116	90%	156	2%	679	8%	415	5%	8552	4848	99	450	254
6	1	8413	3%	235	7,422	88%	348	4%	643	8%	315	4%	8672	5930	289	433	214
7	1	7789	-6%	-309	6,533	74%	1111	14%	842	12%	648	8%	8514	4592	727	590	395
8	1	8537	4%	359	5,462	64%	1575	18%	1500	18%	1250	15%	8448	4458	1072	954	814
9	1	8251	4%	343	6,588	77%	960	12%	902	12%	586	7%	8514	4592	727	642	374
10	1	7960	-3%	-218	7,629	88%	284	4%	647	8%	260	3%	8397	5712	233	452	187
11	1	7997	-2%	-201	6,416	80%	587	7%	802	12%	384	5%	8565	4637	408	522	281
12	1	8555	5%	377	6,220	73%	1012	12%	1323	15%	768	9%	8667	4627	739	901	553
13	1	8155	-4%	-43	4,866	57%	2101	26%	1068	13%	1068	14%	8555	4644	444	622	471
14	1	7929	-2%	-349	7,137	91%	217	3%	415	5%	227	3%	8540	4937	110	313	143
15	1	8116	-1%	-42	7,235	89%	531	7%	730	9%	305	4%	8189	5003	100	466	229
16	1	8268	2%	129	6,162	74%	888	11%	1248	15%	859	10%	8286	4796	627	851	564
17	1	7943	-3%	-295	6,129	77%	796	10%	1018	13%	441	6%	8556	4789	515	652	281
18	1	8147	0%	-31	5,872	72%	841	10%	1041	13%	652	8%	8216	4796	627	870	290
19	1	8482	3%	274	6,220	74%	1112	13%	1130	13%	631	7%	8682	5280	853	789	420
20	1	8384	0%	-168	6,881	82%	481	6%	1064	13%	652	8%	8216	4796	627	870	290
21	1	8370	2%	162	7,647	89%	272	3%	651	8%	221	3%	8238	5614	202	422	150
22	1	8387	2%	229	6,555	78%	689	8%	892	12%	455	6%	8501	5240	621	640	325
23	1	8055	-1%	-113	6,272	78%	644	8%	1149	14%	637	8%	8336	5131	489	739	455
24	1	8237	2%	149	7,568	89%	468	6%	771	9%	310	4%	8547	4954	324	468	199

Disclaimer: This map is to be used as a work map only. This map makes no legal representation to the location of County Commission Districts or Voting Precincts.

Created On: 12/9/2021
 Data Source: U.S. Census Bureau

